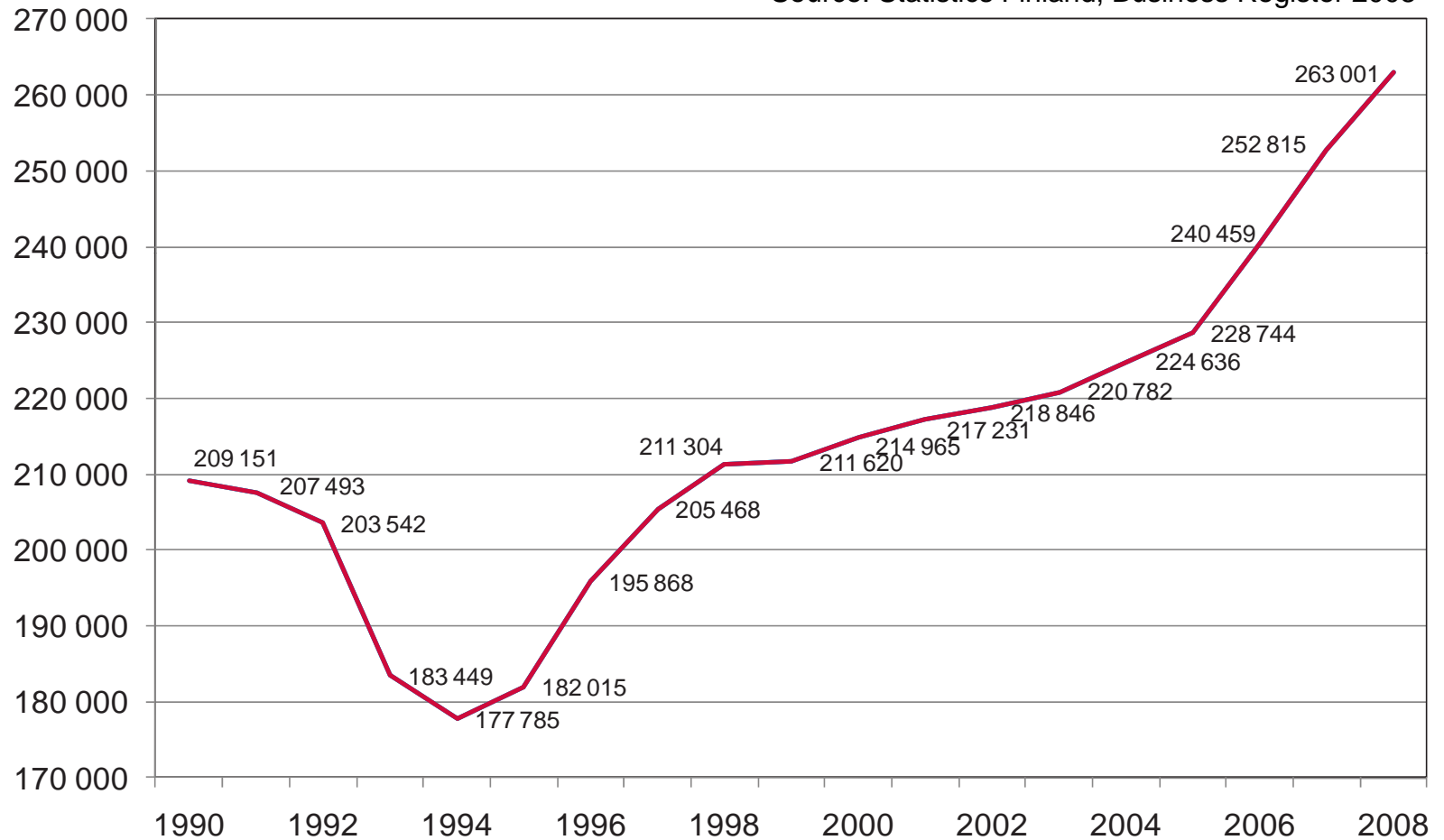


Number of Enterprises

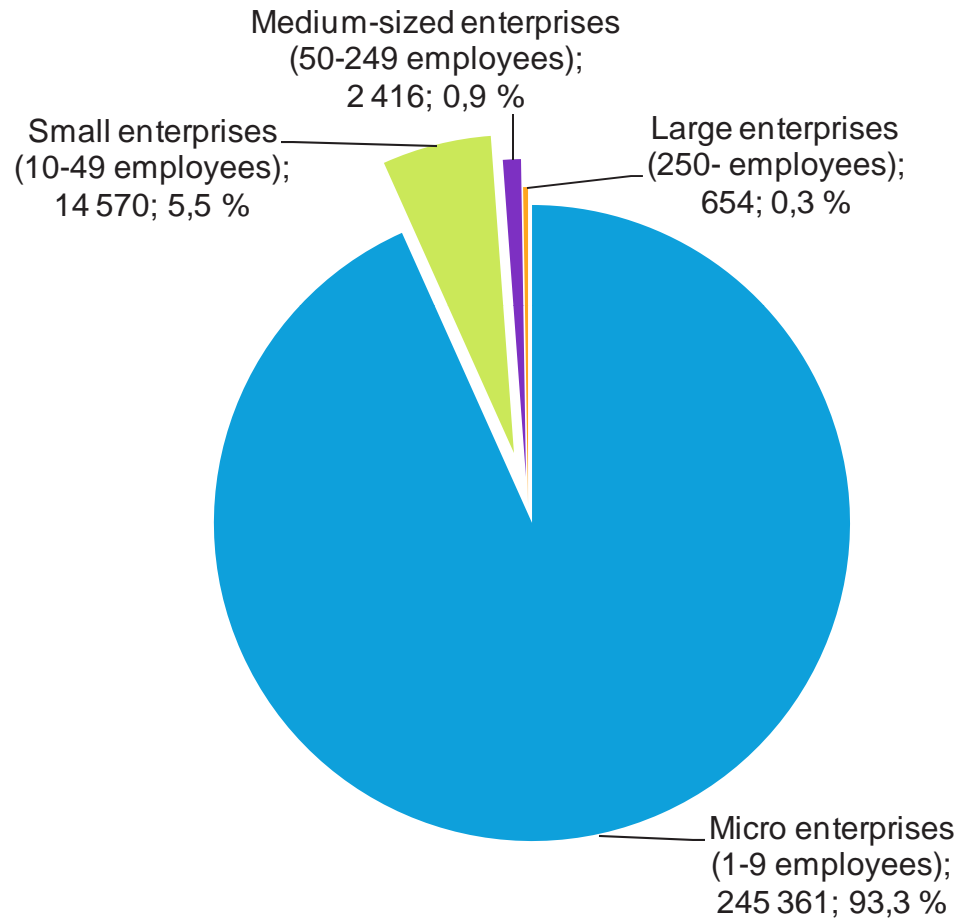
Source: Statistics Finland, Business Register 2008



Total 320 952 enterprises.

Total 263 001 without Agriculture, Forestry and Fishing (in diagram).

Enterprises in Finland

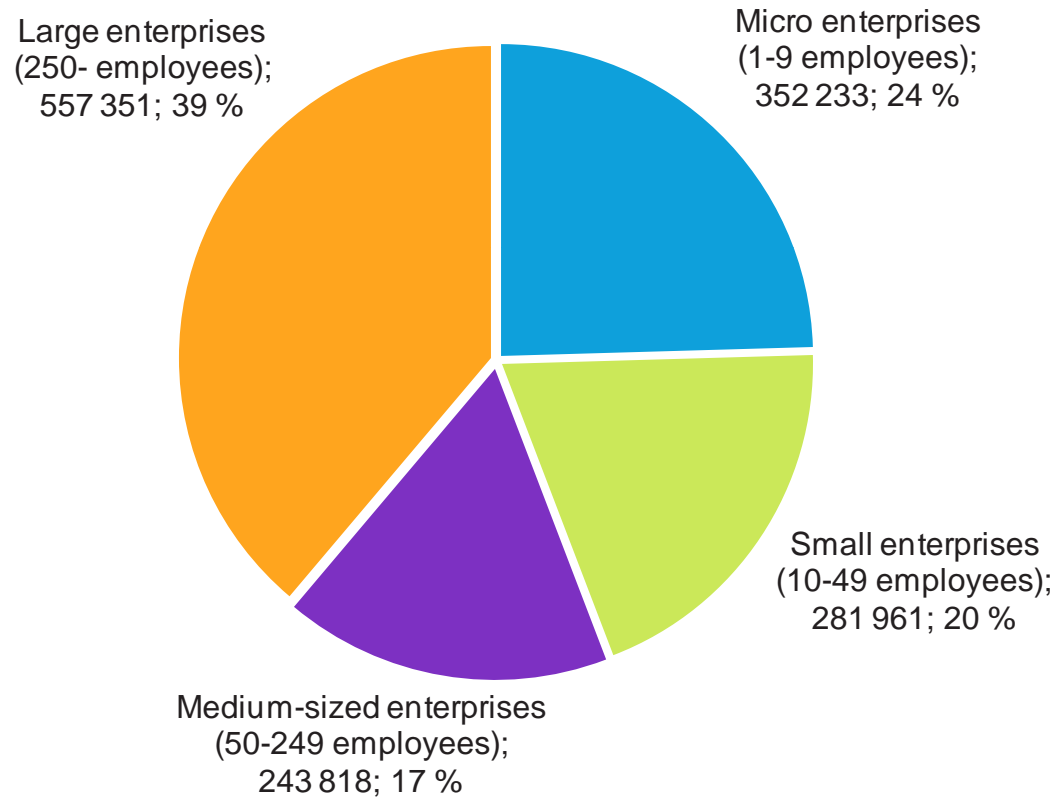


Source: Statistics Finland, Business Register 2008

Total 320 952 enterprises.

Total 263 001 without Agriculture, Forestry and Fishing (in diagram).

Personel in Enterprises

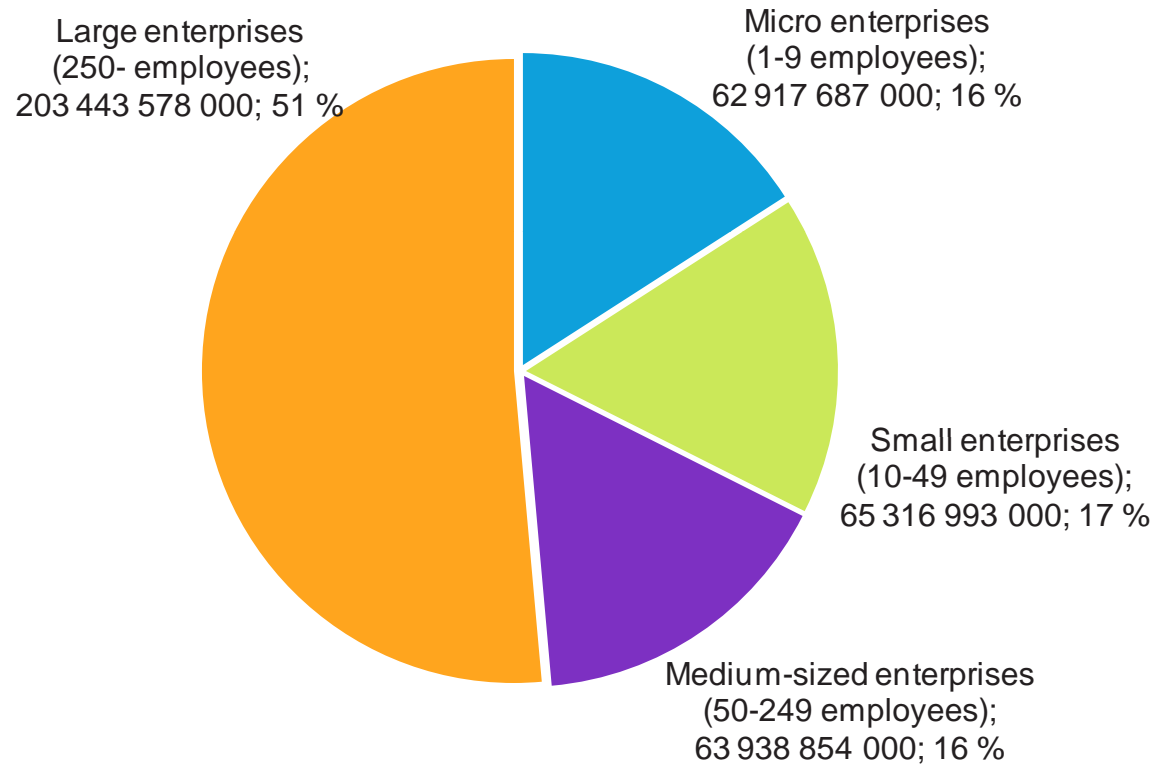


Source: Statistics Finland, Business Register 2008

Total 1 502 213 employees.

Total 1 435 361 without Agriculture, Forestry and Fishing (in diagram).

Turnover in Enterprises

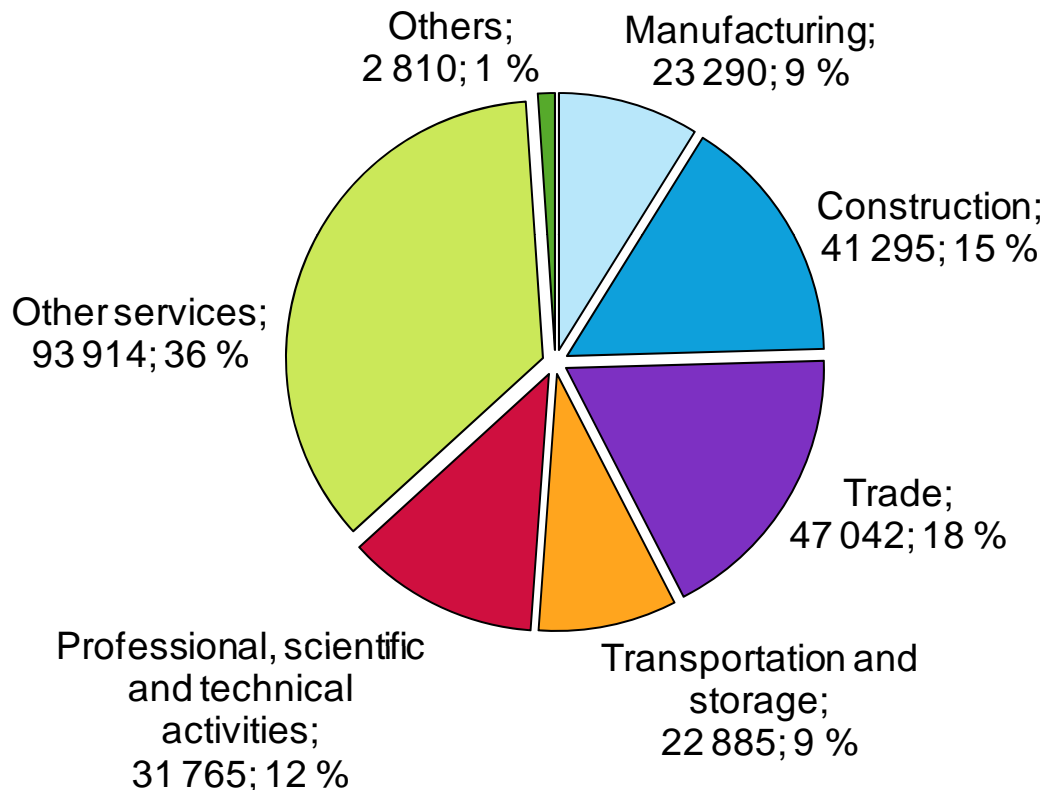


Source: Statistics Finland, Business Register 2008

Total 397 billion euros.

Total 395 billion without Agriculture, Forestry and Fishing (in diagram).

Enterprises according to Branch

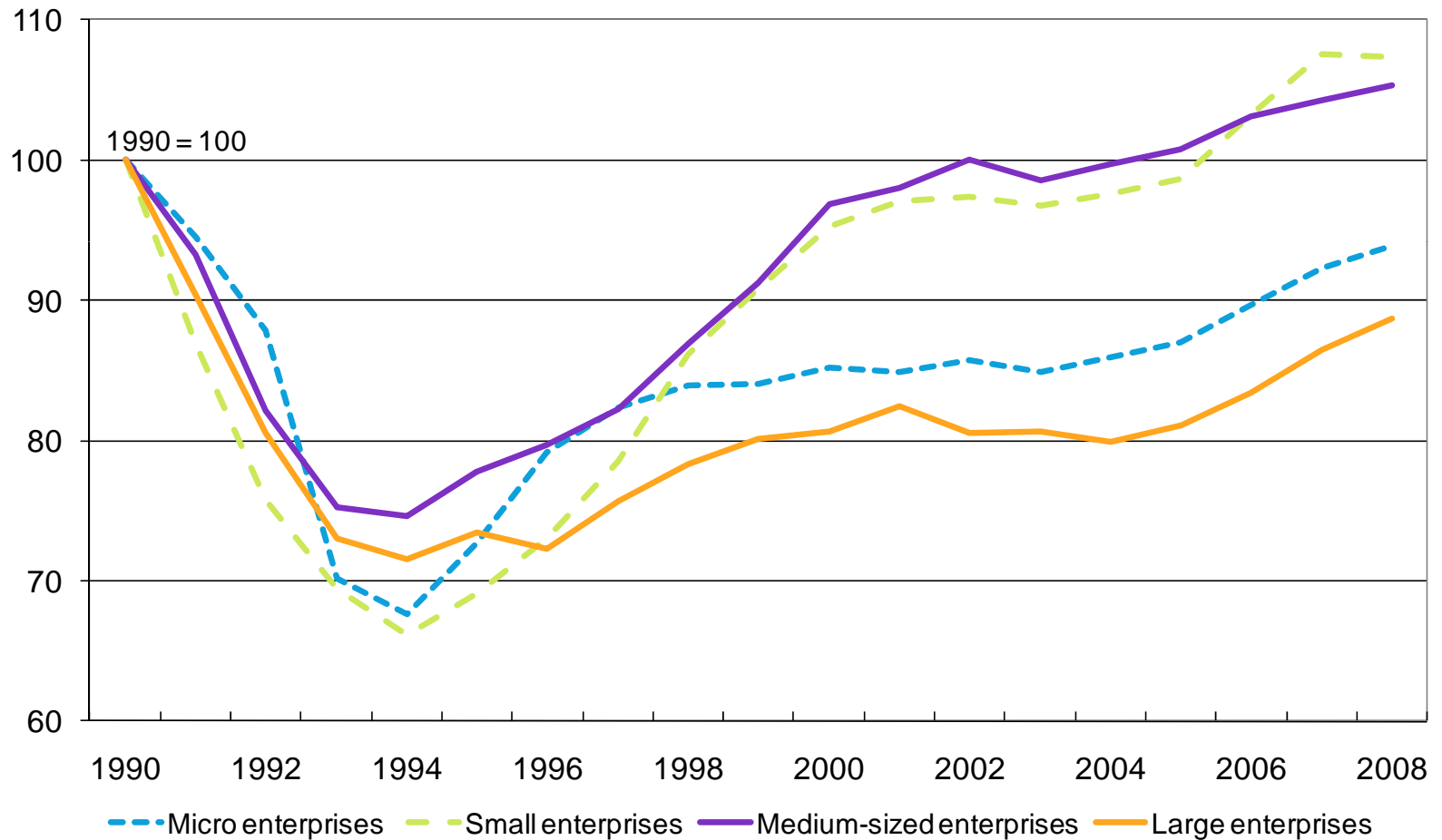


Source: Statistics Finland, Business Register 2008

Total 320 952 enterprises.

Total 263 001 without Agriculture, Forestry and Fishing (in diagram).

Employment in Different Enterprises



Source: Statistics Finland, Business Register 2008